

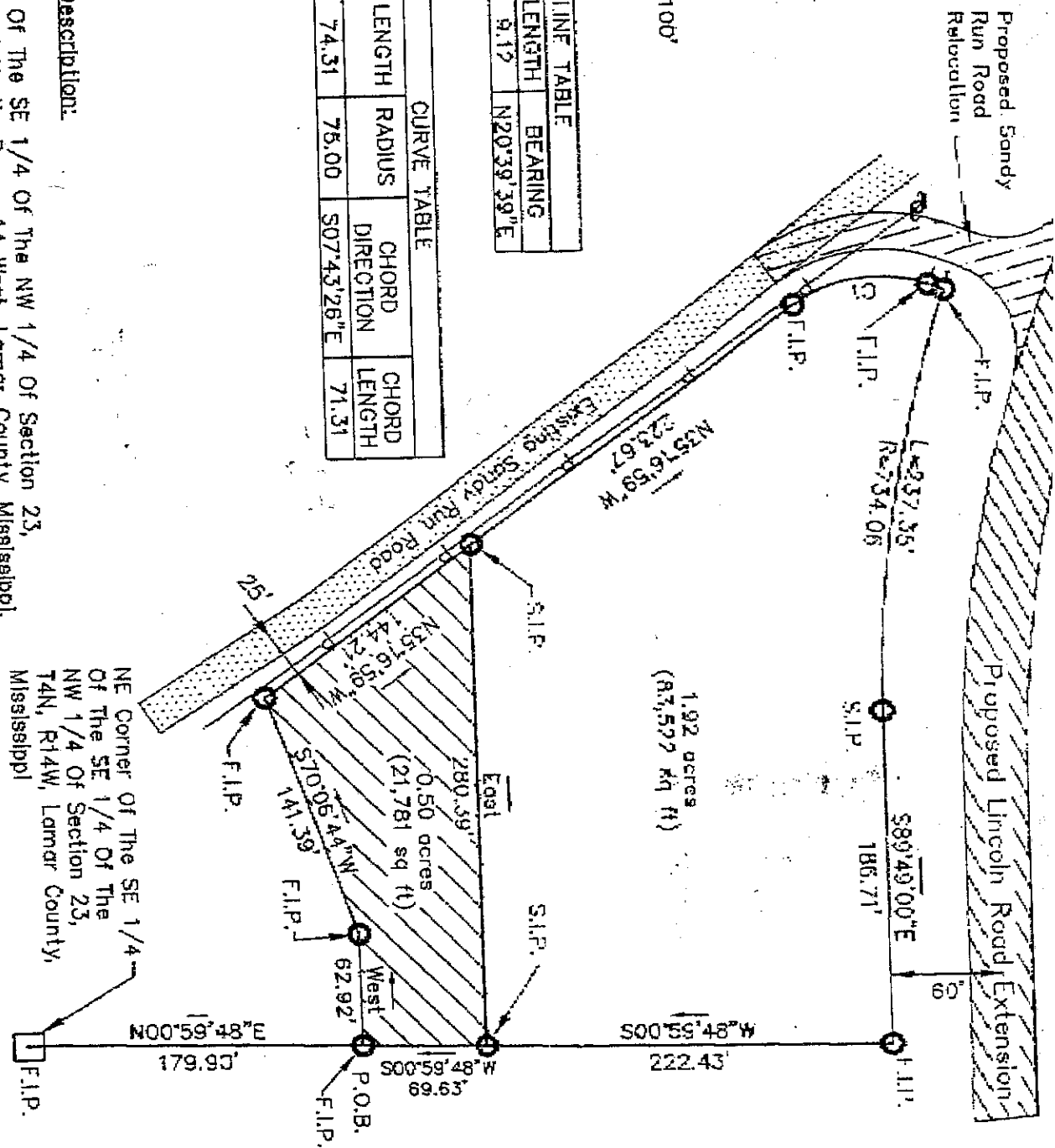


Scale: 1"=100'

LINE	LENGTH	BEARING
11	9.12	N20°39'39"E

CURVE	LENGTH	RADIUS	CHORD DIRECTION	CHORD LENGTH
C1	74.31	76.00	S07°43'26"E	71.31

Legal Description:
A Part Of The SE 1/4 Of The NW 1/4 Of Section 23, Township 4 North, Range 14 West, Lamar County, Mississippi, More Particularly Described As Follows:
Commence At The NE Corner Of The SE 1/4 of the SE 1/4 of the NW 1/4 Of Section 23, Thence Run N00°59'48"E Along The NE Corner Of Said NW 1/4 A Distance Of 179.90 Feet To The



NE Corner Of The SE 1/4 Of The SE 1/4 Of The NW 1/4 Of Section 23, T4N, R14W, Lamar County, Mississippi